



The Power of Being There™



Technical Specifications

Avocent DSR1161/DSR2161/DSR4160

The Avocent DSR Series combines the power of analogue and digital KVM switching technology in a 1U high 16-port chassis. The DSR1161, DSR2161 and DSR4160 appliances provide access and control of multiple data centre servers from any location, using industry standard TCP/IP connections.

DSR1161

- The DSR1161 provides both digital and analogue connectivity for access and control of data centre servers
- The DSR1161 provides KVM switching access to 16 servers with a local analogue port for access at the rack, and an Ethernet port allowing one digital user over IP.
- The DSR1161 provides KVM access to servers through an all CAT5 solution

DSR2161

- The DSR 2161 provides both digital and analogue connectivity for access and control of data centre servers
- The DSR2161 provides KVM switching access to 16 servers with a local analogue port for access at the rack, and an Ethernet port allowing two digital users over IP.
- The DSR2161 provides KVM access to servers through an all CAT5 solution

DSR4160

- The DSR4160 provides digital connectivity for access and control of data centre servers
- The DSR4160 provides KVM switching access to 16 servers through an Ethernet port allowing four digital users over IP.
- The DSR4160 provides KVM access to servers through an all CAT5 solution

Features

- Provides digital IP access at the desk, in the NOC or any location around the world
- Managed with Avocent's DSView Windows application for IP access from any location
- Dramatic reduction in cable volume with DSRIQ Smart Cable
- Optimal scalability and flexibility
- Best of both worlds
 - Analogue KVM access at the rack
 - IP connectivity at the desk, in the NOC or any location in the world

SPECIFICATIONS

Dimensions	Model: DSR1161, DSR2161, DSR4160 Height: 1.75" (4.45cm) Width: 17" (43.18cm) Depth: 11" (27.94cm) Weight: 8lbs (3.6Kg) without cables
Server Ports	Number: 16 Types: PS/2 keyboard, PS/2 Mouse Connectors: RJ45 Sync Types: Separate Horizontal & Vertical Plug & Play: DDC2B
Video Resolution	Local Port: Max 1600 x 1280 @72 Hz Digital Port: Max 1280 x 1024 @75 Hz
Power	Heat Dissipation: 92 Btu/hr Airflow: 8cfm
Power Consumption	25 Watts
AC-input power	40W
AC-input range	100 to 240 VAC
AC-input current rating	1A
AC-Input cable	18.AWG three-wire cable, with a three lead IEC-320 receptacle on the power supply end and a country dependent plug on the resource end
AC Frequency	50-60 Hz Auto Sensing
Operating Temperature	32°F to 104°F (0°C to 40°C)
Non Operating Temperature	-4°F to 158°F (-20°C to 70°C)
Humidity	10 to 95 % non condensing
Configuration Port	Type: Serial RS232 Connectors: DB9 Male
Network Connection	Type: Ethernet: IEEE 8023, 10 Base-T Fast Ethernet: IEEE 802.3U Connector: RJ45
User Consoles	Type: PC running Windows NT or 2000 OS and DSR console application
Minimum Configuration	-300MHz Pentium III, 64Mb RAM, 100BaseT NIC, XGA Video
Recommended Configuration	-450 MHz Pentium III, 128Mb Ram, 100BaseT NIC, SXGA Video
Local Port	PS/2 and VGA (does not apply for DSR4160)
Agency Approvals	EN55022 Class A, EN55024, EN6200-3-2, EN6100-3-3, FCC15 Class A, VCCI Class A, IEC950, EN60950, UL 1950 third edition, CSA C22.2 No 950
Ordering Information	
DSR1161Unit	DSR1161-EU (16 Server, 1 local/1 digital User, PS/2)
DSR2161 Unit	DSR2161-EU (16 Server, 1 local/2 digital Users, PS/2)
DSR4160 Unit	DSR4160-EU (16 Server, 4 digital Users, PS2, USB, Sun)
DSRIQ	DSRIQ-EU (1 Server, PS/2)
DSAUTH	DS Series Admin software (one required per installation)
DSVIEW 1- 1	DS Series User software for one simultaneous user
DSVIEW1-5	DS Series User software for five simultaneous users
DSVIEW1-100	DS Series User software for one hundred simultaneous users

For all new first time DS Series purchases you will require qty 1 of Part #DSAUTH and at least qty 1 of part # DSVIEW 1



The Power of Being There™



Technical Specifications

Avocent DSR1161/DSR2161/DSR4160

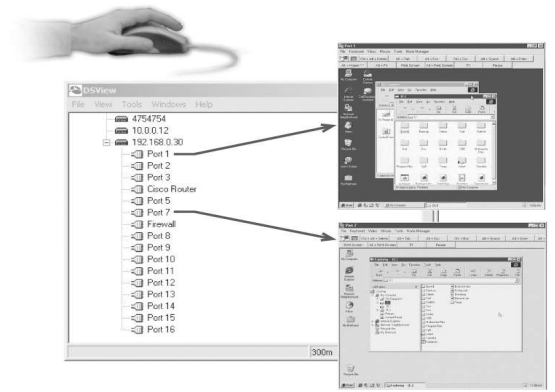
DSView

The DSView Windows application is the cornerstone of the DS Series product suite. DSView centralizes control of the DSR1161, DSR2161, DSR4160, DS1800 and CPS network appliances. Avocent's DSView application provides 'point-and-click' control to any connected device, using industry standard TCP/IP (Ethernet) connections and DES encryption. The DSView application uses standard TCP/IP connections so that you can easily troubleshoot, or even reboot a server, from the NOC, from your desk or from any location in the world. With DSView, you can access all of your data centre devices from a single screen making complex network access and control remarkably easier.

DS VIEW

Select the device you want to control

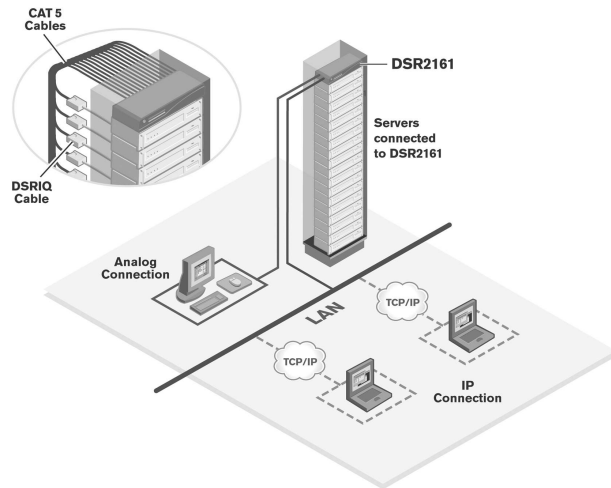
Windows are created, each representing a connected device



DSView Provides centralised control of:

- Multi-platform servers
 - PS/2, Sun, Unix/Linux and USB
- Serial devices
 - Routers, hubs firewalls, power strips and terminal devices

DSR Rack and IP Access



DSRIQ Smart Cable

An added benefit of the DSR suite is the DSRIQ smart cable with CAT 5 design features 'Keep Alive' and dramatically reduces cable clutter, which makes the design well suited for high-density installations. The space saving CAT 5 cabling significantly reduces cable volume in the back of the rack and provides optimal digital display resolution and video settings.

With a built in microprocessor for convenient upgrades, the smart cable works seamlessly between the DSR and the server to provide unsurpassed connectivity solutions. The smart cable's embedded Keep Alive feature allows attached servers to continue network functions in the event of power failure to the switch. Keyboard and mouse emulation processing is powered from the keyboard connection on the servers.

Products at a Glance

	TARGET DEVICES	SIMULTANEOUS USERS	PLATFORMS
DSR1161	16 Servers	1 Local 1 Digital	PS/2
DSR2161	16 Servers	1 Local 2 Digital	PS/2
DSR4160	16 Servers	4 Digital	PS/2



Avocent International Limited
European Headquarters
Avocent House
Shannon Free Zone
Shannon, Co Clare, Ireland.
Tel: 00 353 61 471 877
Fax: 00 353 61 471 871
www.avocent-europe.com

Avocent International Limited
Asia Pacific
15-01 Amara Corporate Tower
100 Tras Street
Singapore 079027
Tel: 0065 227 3773
Fax: 0065 223 9155

Avocent Corporation
4991 Corporate Drive
Huntsville, AL 35805
USA
Tel: 001 256 430 4000
Fax: 001 256 430 4031
www.avocent.com